

Innovation & Technology Transfer @ EPFL

quick overview

Gabriel Clerc
head of technology transfer @ EPFL
www.epfl.ch/sri

The EPFL today ... a growing campus

6'500 Students
5 Schools
2 Colleges
> 250 Labs
> 4'000 Staff

Federal budget 487 mio CHF/y
External funding 157 mio CHF/y

1) Teaching & Education

2) Research

3) Innovation & Technology Transfer

Contribute to create and develop ...



future companies

future jobs

future products / services

future competitiveness

future quality of life

...

1986 : industrial liaison program : Cast / association APLE

1986 : two first major strategic industrial partnerships

1988 : policy for research contracts & partnerships

1991 : science park created : foundation PSE

1993 : IP strategy / licensing

1995 : pre-seed money for start-up projects : foundation FIT

1997 : coaching for early stage start-up projects

1998 : technology transfer : creation of the TT office (SRI)

1999 : entrepreneurship courses

1999 : rules for remuneration of inventors and labs

2000 : first equity deals

2003 : legal framework adapted for efficient TT

2004 : vice-presidency for innovation and TT

2005 : centers, programs, innovation grants, TT alliance

2006 : new partnerships : endowed chairs, indus. incubators

2007 : revised TT regulations & overhead policy

2008 : seed fund

...

Research agreements : *attractive and clear policy*



IP management & transfer : *teamwork with scientists*

Start-ups : *early stage support*

SME's : *liaison program, facilitate access to R&D and new knowledge*

Larger Cies : *partnerships, endowment*

Centers, programs and special projects : *develop cooperation and innovation spirit on the campus*

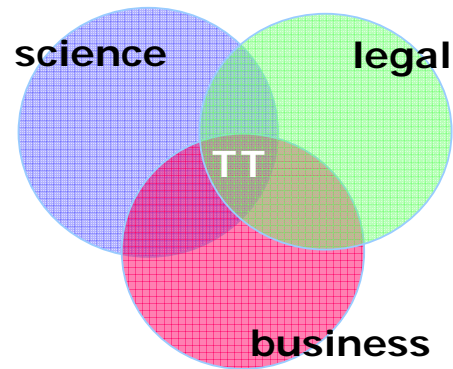
attractive trans-disciplinarily projects and programs

- Space
- Energy
- Bernoulli (math)
- Design
- Blue brain project
-

- Alinghi
- Solar Impulse
- Hydroptère



7 professionals
with complementary
background and experiences

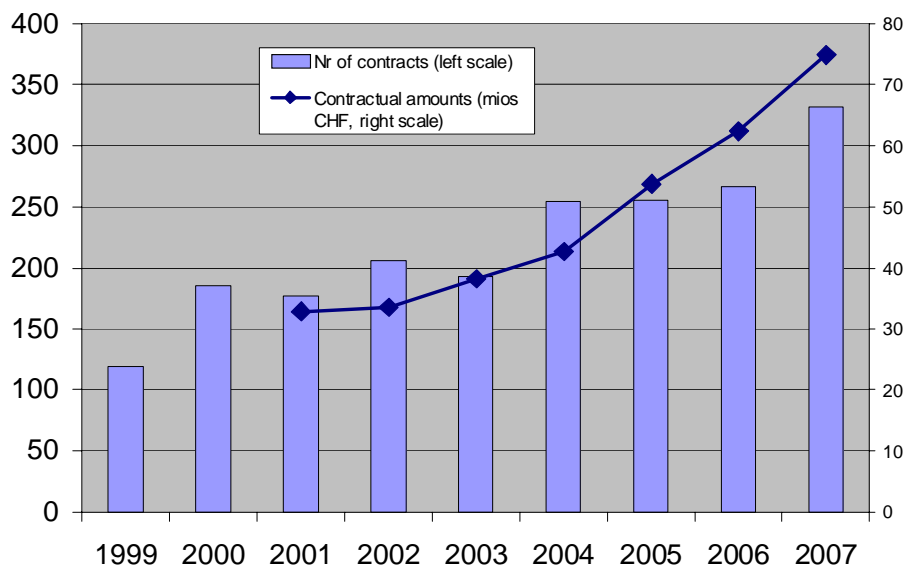


main missions of TT office :

- **Research agreements, partnerships, MTA's, NDA's, ...**
- **Intellectual property** evaluation, protection & mgmt
- **Technology licensing**
- Interactions with **start-ups** (licenses, equity, use of facilities, R&D, COI, ...)
- Practical course in PhD school

more research with third parties

EPFL-SRI : research agreements



Partnership with Nestlé
2 endowed chairs
R&D program



Partnership with Logitech
Joint project incubator on campus
R&D and student projects



Partnership with Merck-Serono
3 endowed chairs
R&D program



Partnership with NOKIA
Nokia lab on campus
R&D program

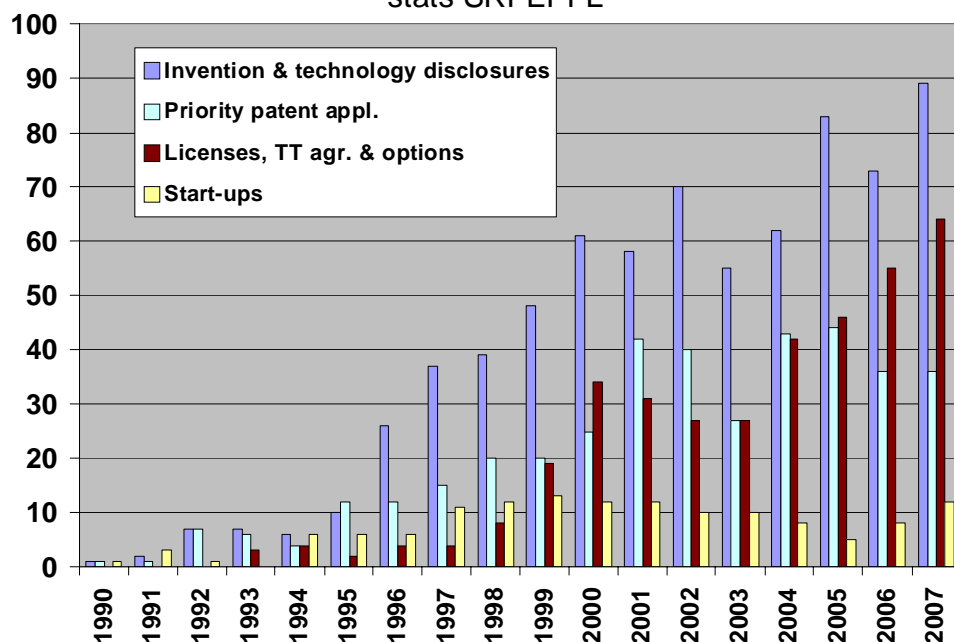


+ Swissquote, Debiopharm, SwissUp, La Poste, ...

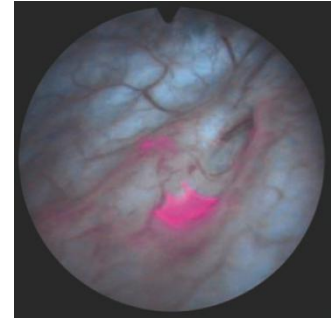
Technology transfer office licensing and technology transfer

develop the innovation and TT culture

Technology Licensing @ EPFL
stats SRI-EPFL



Early detection of bladder cancer using photodynamic therapy
License Photocure (Nor) / s-lic. GE Healthcare
(jointly with univ. hosp.)



Dye Solar Cells

Start-up G24i (GB) created in 2006 : production facility under construction



Audio technologies

- many licenses and IP transfer
- lic. to Logitech (echo-canceling / web cam)
- start-up



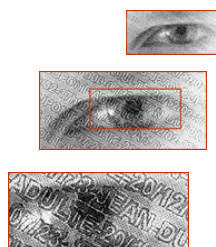
Delta Robot

successful industrialization > 20y



Security of documents

many licenses to various partners



"Innogrants"

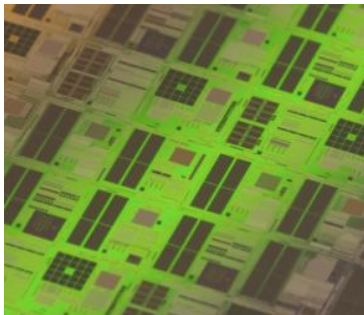
Financial support to internal innovative projects of potential future entrepreneurs (before Cny creation), stimulate entrepreneurship attitude, coaching

Science park on campus (foundation PSE)

Offices, lab space, IT services (market prices)
Coaching (mainly subsidized)

Pre-seed and seed financing

pre-seed loans (foundation FIT)
VC fund for seed rounds (polytech advisors SA)



Z-RAM (1T DRAM)
Rapid growth with VC funding
Key partnerships / licenses



Telemetrically-controlled implants
Acquired by Allergan in 2007, 100 mio USD

... and many other start-ups, see <http://sri.epfl.ch/page17492.html>

- > contribute to economic development,
- > focus on SME's

get pro-actively the needs of the companies,
translate such needs into projects,
find the right partners, information, networking, ...

 improve the TT demand of Cies

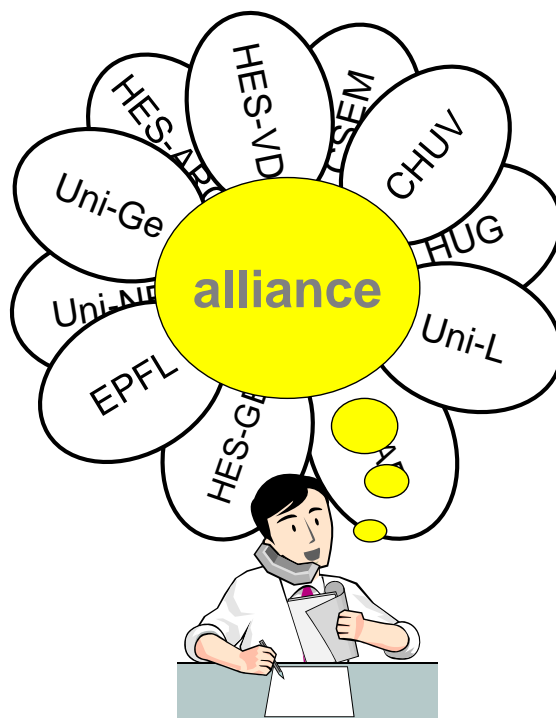
alliance

- single entry point for Cnies
- access to ca 6'000 researchers
- professional TT services

EPFL (coordination), UNI-L, UNI-GE,
UNI-NE, CHUV, HUG, HES-SO, USI, SUPSI

alliance

POUR INNOVER



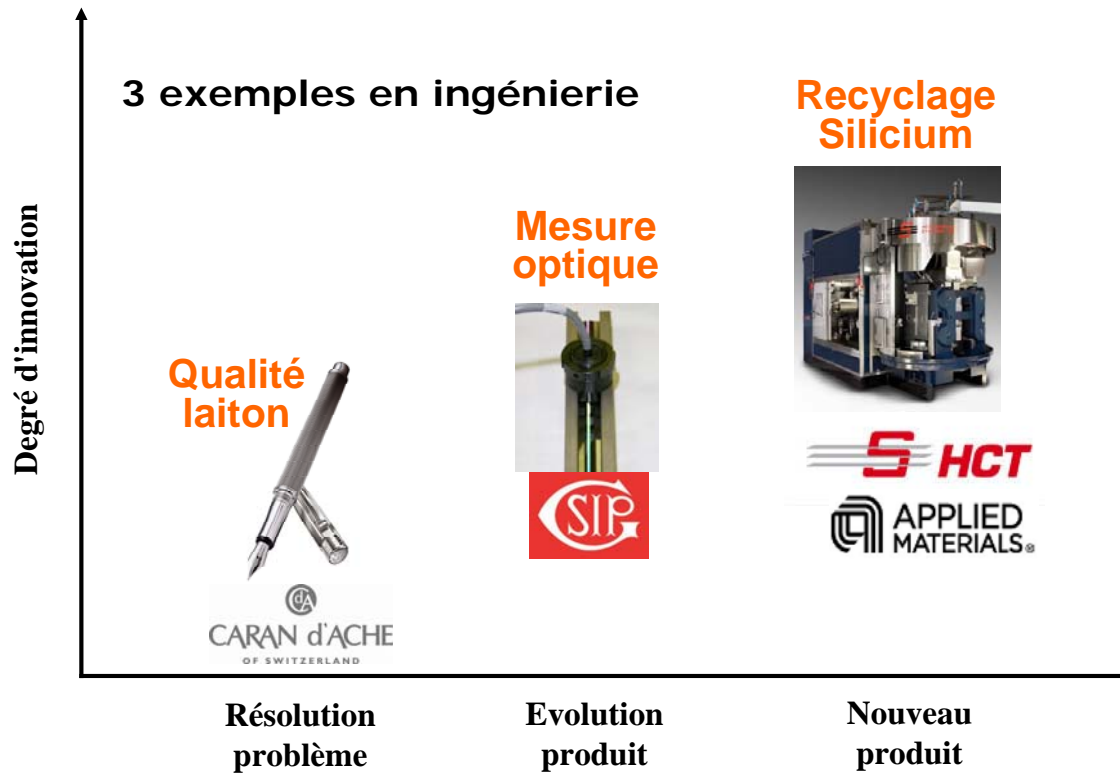
**simplify the
entrepreneur's life !**

professional advises and contacts
(conseillers technologiques expérimentés)



Stats of industrial liaison program 2006-2008

	Results	Objectives
Visited companies	343	300
Projects in preparation	408	NA
Proposed projects	188	180
Accepted projects	92	90



research contracts with industry at EPFL a revised regulation in 2007

Objectives of the policy :

- Easier and shorter negotiations
- Attractive IP conditions for companies
- Clear general rules with possibilities for special cases (flexibility)
- Fair contributions to indirect costs (overhead policy)
- Incentive for the labs and schools (redistribution of the overhead)

Academic research ↔ Economy & industry



« win - win »

TT : we work for our future ... it is our motivation !

